



NZACA/EBOS HEALTHCARE

EXCELLENCE IN CARE AWARDS 2019



**INFORMATION AND
ENTRY FORM BOOKLET**

INTRODUCTION

The New Zealand Aged Care Association (NZACA) is a powerful advocate representing New Zealand's aged residential care sector. NZACA ensures that the sector gets the recognition and support it requires for our members to continue to provide excellence in care at all levels.

Aged residential care providers in New Zealand deliver services to over 34,000 elderly New Zealanders and their families every year. Often, examples of excellence in this core health service are overlooked or go largely unrecognised outside the immediate community.

In 2007, the NZACA (formerly HealthCare Providers NZ) developed the awards for excellence in aged residential care. These prestigious awards recognised the continuous pursuit of excellence by aged residential care facilities and their staff.

This year the awards recognise excellence in two categories: the first being care facilities or a particular aspect of running a care facility, and the second being for individuals who have made outstanding contributions to the lives of the people they care for and those they work with.

The awards are open to all financial members of the NZACA. Judging will be carried out by an independent panel of judges, and the winners will be announced at the NZACA/ Ebos awards ceremony to be held at Te Papa, Wellington on 23 October 2019.

An essential part of the awards is recognition that the aged care industry has been operating under considerable challenges over the years, and yet continues to provide excellent care. These awards will recognise those care facilities and individuals that have made innovations to continuously improve services to residents and opportunities for staff. These changes may be on a very small or very large scale. Ultimately, the success of all applications will be judged on the improved outcomes for residents and their families.

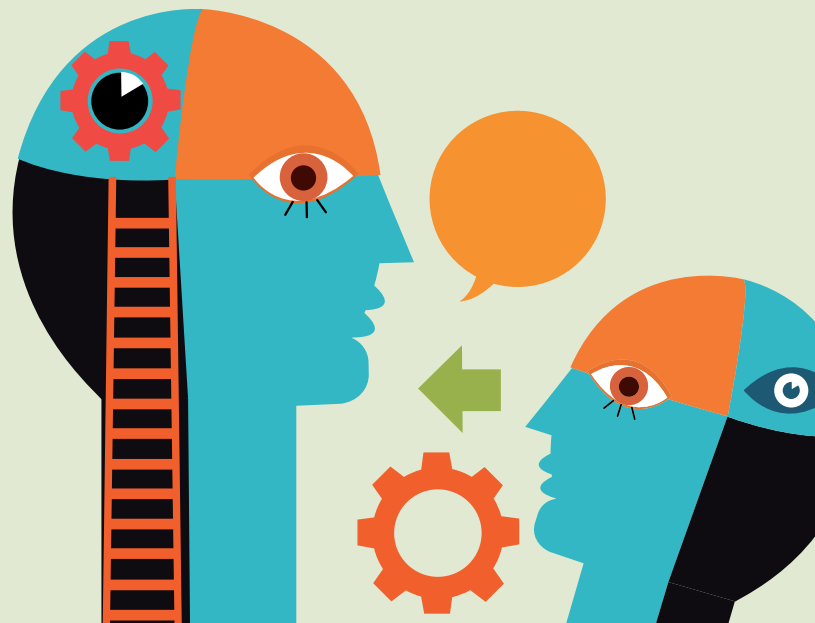
We look forward to receiving your entries this year.

AWARD PARTNERS – EBOS HEALTHCARE



FURTHER DETAILS REGARDING THE APPLICATION FORM AND ENTRY GUIDELINES WILL BE AVAILABLE ON:

W conference.nzaca.org.nz



AWARD CATEGORIES

This year there are two groups of award categories. The first group of awards known as the ‘care facility categories’ is aimed at care facilities in general, or a particular aspect of operating a care facility. The second category is referred to as the ‘individual categories’ which is aimed at individuals in the industry who have made a valuable contribution to the lives of the people they care for.

CARE FACILITY AWARD CATEGORIES

INVACARE SMALL OPERATOR INDUSTRY AWARD

This award recognises the outstanding work of smaller operators in the New Zealand aged residential care industry in the care for, and support and enrichment of, the lives of residents, their families and staff. A small operator is defined as a care facility with fewer than 50 beds, which is not part of a group consisting of a combined total of more than 300 beds across the group.

BIDFOOD EXCELLENCE IN FOOD AWARD FOR CARE HOMES AND HOSPITALS

This award recognises exceptional efforts by members to enhance the excellence of the food service they deliver to residents. Consideration will be given to taste, what is served, the environment, setting, delivery and presentation.

MEDI-MAP COMMUNITY CONNECTIONS AWARD

This award recognises exceptional effort in catering for residents’ needs and preferences by creating an environment that promotes inclusion and choice for older New Zealanders. This may include the creation of a feeling of community within a care facility, the outreach of a care facility to the surrounding community or connecting residents with their families and friends.

ARJO TRAINING AND STAFF DEVELOPMENT AWARD

This award recognises exceptional training and staff development by organisations (either care facilities or groups) within the aged care industry. This may include efforts to integrate staff training and development to continue to lift the standard of client-focused quality care, or creative and innovative staff training and development, which can provide an example to other aged care organisations.

QPS BENCHMARKING INNOVATIVE DELIVERY AWARD

This award recognises exceptional effort by organisations and care facilities to enhance the excellence of the care they deliver to residents. This may be through innovation, creativity or redesign of the delivery of services in order to provide a true continuum of care options for elderly residents.

JACKSON VAN INTERIORS BUILT AND GROWN ENVIRONMENT AWARD

This award recognises exceptional design, construction or changes to a care facility to create a positive environment for residents and staff. This may include innovative or creative garden and landscape design, construction of physical care facility buildings or changes to the interior to achieve superior results for elderly residents.

INDIVIDUAL AWARD CATEGORIES

LEECARE SOLUTIONS STAND-OUT INDIVIDUAL AWARD

This award recognises the stand-out individual in a care facility. This individual may be the unsung hero within their care facility who goes above and beyond to improve the quality of the lives of the individual(s) they care for. This award is open to anyone who is a volunteer, employed or contracted in an aged residential care facility.

VCARE LEGENDARY SERVICE TO THE AGED RESIDENTIAL CARE INDUSTRY AWARD

This award recognises the outstanding contribution of someone who has been part of the aged residential care industry for more than ten years. This person will have continuously made a difference in the many lives of residents and staff. Entrants to this award could be anyone from a senior manager of a large group, to care staff, non-care staff or a volunteer in the aged residential care industry.

OVERALL WINNER

There is also an overall winner category and all entries submitted will automatically be entered for this category.

PRIZES

The prize structure is as follows:

OVERALL WINNER	PRIZE
EBOS HEALTHCARE OVERALL EXCELLENCE IN AGED CARE AWARD	Excellence in Care Award trophy and a trip for two to a conference of your choice in 2019, including flights, accommodation and registration (to the value of \$5,000 ¹).

CARE FACILITY CATEGORY WINNERS	PRIZE
INVACARE SMALL OPERATOR INDUSTRY AWARD	Trophy, certificate plus prize valued at \$1000
MEDI-MAP COMMUNITY CONNECTIONS AWARD	Trophy, certificate plus a prize valued at \$1000
ARJO TRAINING AND STAFF DEVELOPMENT AWARD	Trophy, certificate plus a prize valued at \$1000
QPS BENCHMARKING INNOVATIVE DELIVERY AWARD	Trophy, certificate plus a prize valued at \$1000
JACKSON VAN INTERIORS BUILT AND GROWN ENVIRONMENT AWARD	Trophy, certificate plus a prize valued at \$1000
BIDFOOD EXCELLENCE IN FOOD AWARD FOR CARE HOMES AND HOSPITALS	Trophy, certificate plus a prize valued at \$1000

INDIVIDUAL CATEGORY WINNERS	PRIZE
LEECARE SOLUTIONS STAND-OUT INDIVIDUAL AWARD	Trophy plus a prize valued at \$1000
VCARE LEGENDARY SERVICE TO THE AGED RESIDENTIAL CARE INDUSTRY AWARD	Trophy plus a prize valued at \$1000

¹ The prize must be claimed by 31 December 2020. Cash will not be given to the winning care facility.

AWARDS PROCESS

ENTRIES

The 2019 NZACA/EBOS Healthcare Excellence in Care Awards are open for nominations on Tuesday, 4 June 2019. Entries to all eight categories of these awards will be accepted from eligible aged residential care facilities and groups until 5pm on Wednesday, 28 August 2019.

ELIGIBILITY

All care facilities who wish to enter these awards **MUST** be:

- » certified to operate in New Zealand
- » meeting their obligations under the Age Related Residential Care Services Agreement
- » meeting all compliance requirements regarding certification and accreditation
- » a current financial member of the New Zealand Aged Care Association for the 2019/20 year.

SPECIFIC ELIGIBILITY FOR AWARD CATEGORIES

To be eligible for all award categories, entrants must meet the above criteria, and two of the award categories have further eligibility requirements.

Small Operator Industry Award category

For a care facility to be eligible:

1. they must be certified for fewer than 50 beds
2. if they are part of a group, then that group must have a combined total of fewer than 300 beds across all their care facilities.

Legendary Service to the Aged Residential Care Sector Award category

For an individual to be eligible, they must have contributed to the aged residential care industry for more than ten years.

PROCESS

1. All entrants must complete the official entry form (at end of booklet), which must be returned to the NZACA National Office by 5pm on Wednesday, 28 August 2019.
2. Once all entries are received, they will be judged by one of three judging panels.
3. Two finalists will be agreed upon by the judges for each category.
4. All finalists will be notified of the outcome of their entry in the week commencing 30 September 2019
 - a. Finalists in the care facility categories will be asked to complete a second round of judging (see details below).

5. Following the completion of all judging, the judging panels will convene to decide on winners of each category and the overall winner.
6. Category and the overall winner will be announced at the NZACA conference gala dinner on Wednesday, 23 October 2019.

SECOND ROUND OF CARE HOME AWARDS JUDGING

Entrants that are selected as finalists in the care facility award categories will be part of the second round of judging.

Finalists in the Bidfood Excellence in Food Award for Care Homes and Hospitals

The second round of judging for these finalists will be an onsite visit by the judging panel to observe the meal preparation. The judges will then dine with residents for a lunchtime meal, to judge the food service in action and gain feedback from residents.

The three judges will visit onsite one day in the week commencing 7 October 2019 without prior arrangement.

In addition, the video submitted as part of the original entry will be shown to the conference delegation during the award finalist presentations at NZACA's annual conference.

Other care facility category award finalists

Finalists in the remaining five categories will give a four-minute presentation to the judges and conference delegation on Wednesday, 23 October 2019.

FINALIST PRESENTATION CRITERIA

- » **MAXIMUM** of four minutes to give a brief outline of their entry. (Presentations are to outline their entry and meet the criteria outlined on the preceding pages.)
- » A three-minute warning bell will be given to presenters.
- » Presentations will be cut short if they are longer than four minutes.
- » Finalists will be marked on their ability to stay within the maximum of four minutes as part of the final judging process.
- » Presentations may include a PowerPoint presentation if finalists wish to do so.
- » Presentations or videos are to be handed in to the registration desk by afternoon tea on the first day of the conference (Tuesday, 22 October 2019), in a bid to avoid technology issues.

AWARD WINNERS AND CEREMONY

All finalists and other entrants are invited to celebrate the success of the industry at the NZACA/ASB gala dinner and awards ceremony on the evening of Wednesday, 23 October 2019. The dinner is themed 'Movie Greats'.

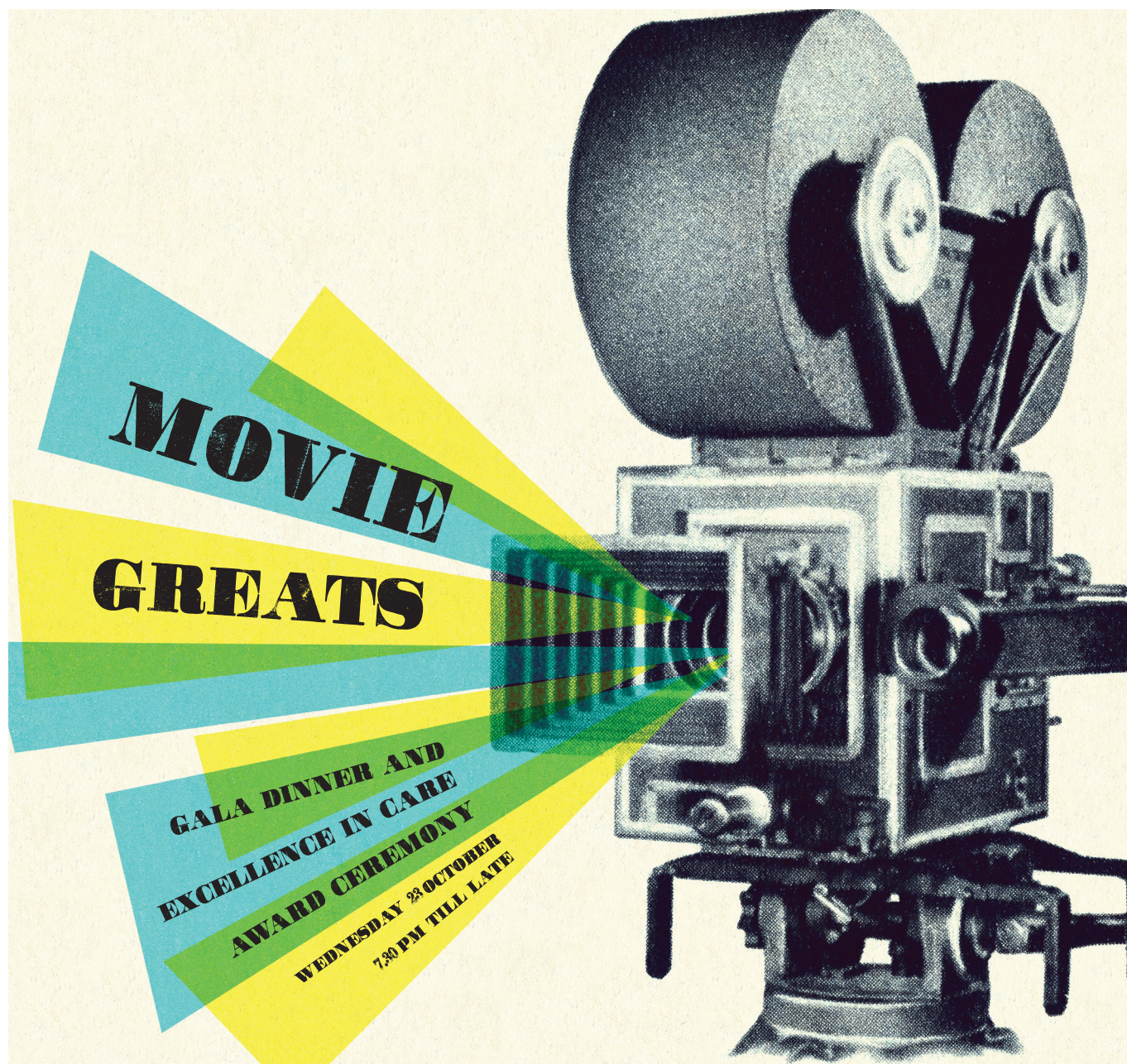
Tickets to the awards ceremony may either be purchased as part of a full conference registration or separately.

Winners of each category and the overall winner will be announced during the dinner, with trophies, certificates and prizes awarded on the night.

Highly commended entries will be awarded during the finalist presentations on 23 October 2019.

TICKETS AND PRICING INFORMATION ARE AVAILABLE ON:

w conference.nzaca.org.nz



CATEGORY CRITERIA

CARE FACILITY AWARD CATEGORIES



INVACARE SMALL OPERATOR INDUSTRY AWARD

Outline of award

This award recognises the outstanding work of smaller operators in the New Zealand aged residential care industry in caring for, supporting and enriching the lives of residents, their families and staff.

For a care facility to be eligible:

1. they must be certified for fewer than 50 beds
2. if they are part of a group, then that group must have a combined total of fewer than 300 beds across all their care facilities.

Entries should demonstrate how the care facility has:

1. impacted on the quality of lives of their residents and families
2. impacted on the education and working environment of its staff
3. involved families of residents in the care facility's activities
4. communicated with/provided feedback to the families of residents
5. formed part of its local community (both in terms of community involvement with the care home and residents' involvement with the community outside the care facility).

YOUR ENTRY MUST INCLUDE:

- A completed entry form

YOUR ENTRY COULD ALSO INCLUDE:

- Photos
- Testimonials from residents, staff, families or the community



BIDFOOD EXCELLENCE IN FOOD AWARD FOR CARE HOMES AND HOSPITALS

Outline of award

This award recognises exceptional efforts by members to enhance the excellence of food service they deliver to residents. Consideration will be given to taste, what is served, the environment, setting, delivery and presentation.

Entries should:

1. give examples of how the food service delivery (from preparation right through to delivery and resident satisfaction) has impacted on the residents' quality of life
2. document how the style of food is fit for purpose (Does the meal cater for residents' tastes, preferences and style of food choice? Is it culturally appropriate for the residents? Is the meal nutritionally sound?)
3. document the factors taken into consideration when designing and implementing the food service programme.

YOUR ENTRY MUST INCLUDE:

- A completed entry form
- A four-minute video of your food service programme (this could include, for example, meal preparations, meal delivery and feedback from residents, staff and families)

YOUR ENTRY COULD ALSO INCLUDE:

- Photos
- Testimonials from residents, staff, families or the community

CATEGORY CRITERIA

CARE FACILITY AWARD CATEGORIES



MEDI-MAP COMMUNITY CONNECTIONS AWARD

Outline of award

This award recognises exceptional effort in catering for residents' needs and preferences by creating an environment that promotes inclusion and choice for older New Zealanders. This may include the creation of a feeling of community within a care facility, the outreach of a care facility to the surrounding community, or connecting residents with their families and friends.

Entries should demonstrate:

1. how the outcome of the programme/initiative directly impacted on the quality of care the residents/family received
2. how the residents were involved in the programme/initiative
3. the involvement of families, community group(s) and organisation(s) in a range of settings
4. attempts to provide services to/for residents in a manner which is integrated with the provision of other services within the community
5. attempts to meet cultural, ethnic or other needs of residents.

YOUR ENTRY MUST INCLUDE:

- A completed entry form

YOUR ENTRY COULD ALSO INCLUDE:

- Photos
- Testimonials from residents, staff, families or the community



ARJO TRAINING AND STAFF DEVELOPMENT AWARD

Outline of award

This award recognises exceptional training and staff development by organisations (either care facilities or groups) within the aged care industry. This may include efforts to integrate staff training and development to continue to lift the standard of client-focused quality care, or creative and innovative staff training and development, which can provide an example to other aged care organisations.

Entries should demonstrate:

1. how the training programme has increased the skill of staff
2. how the outcome of the training has directly impacted on the quality of care the residents/family received
3. methods of staff training and development that aim to create a workplace culture of ongoing professional development to provide excellent care
4. successful practices that encourage, foster and enable participation and involvement of staff in training and development
5. the positive impact the staff training and development has had on the culture within the care facility/group.

YOUR ENTRY MUST INCLUDE:

- A completed entry form

YOUR ENTRY COULD ALSO INCLUDE:

- Photos
- Testimonials from residents, staff, families or the community

CATEGORY CRITERIA

CARE FACILITY AWARD CATEGORIES



QPS BENCHMARKING INNOVATIVE DELIVERY AWARD

Outline of award

This award recognises exceptional effort by organisations and care facilities to enhance the excellence of the care they deliver to residents. This may be through innovation, creativity or redesign of the delivery of services to provide a true continuum of care options for elderly residents.

Entries should:

1. include examples of how the innovation has impacted on the resident's quality of life
2. document why the entry was innovative (Is it the first of its kind in the NZ ARC? Adapted from another industry? Has it improved efficiency in the care of residents/how the business operates?).

YOUR ENTRY MUST INCLUDE:

- A completed entry form

YOUR ENTRY COULD ALSO INCLUDE:

- Photos
- Testimonials from residents, staff, families or the community



JACKSON VAN INTERIORS BUILT AND GROWN ENVIRONMENT AWARD

Outline of award

This award recognises exceptional design, construction or changes to a care facility to create a positive environment for residents and staff. This may include innovative or creative garden and landscape design, construction of physical care facility buildings or changes to the interior to achieve superior results for elderly residents.

Entries should demonstrate how the innovative or exceptional design, construction or change to the care facility:

1. has impacted on the residents' quality of life
2. is different and/or has made a difference
3. has impacted on the care facility/business.

YOUR ENTRY MUST INCLUDE:

- A completed entry form
- 'Before' and 'after' plans/photos/details of improvements made to your care facility environment

YOUR ENTRY COULD ALSO INCLUDE:

- Photos
- Testimonials from residents, staff, families or the community

CATEGORY CRITERIA

INDIVIDUAL AWARD CATEGORIES



LEECARE SOLUTIONS STAND-OUT INDIVIDUAL AWARD

Outline of award

This award recognises the stand-out individual in a care facility. This individual may be the unsung hero within their care facility who goes above and beyond to improve the quality of the lives of the individual(s) that they care for. This award is open to anyone who is either a volunteer, employed or contracted in an aged residential care facility.

Entries should:

1. document how their commitment/skills directly impacted on the quality of care the residents/family received (for example, someone in a management position may have trained staff for skilled care)

consider:

- » feedback from residents and/or family
- » low falls risk
- » surveys
- » other team members

2. provide examples of their positive impact on the team within which they are working
3. provide examples of how this has benefited the care facility

consider whether the work of this individual has:

- » created a great name within the community
- » contributed to continued high occupancy and a wait list
- » created relationships with allied professionals
- » generated revenue.

YOUR ENTRY MUST INCLUDE:

- A completed entry form

YOUR ENTRY COULD ALSO INCLUDE:

- Photos
- Testimonials from residents, staff, families or the community



VCARE LEGENDARY SERVICE TO THE AGED RESIDENTIAL CARE INDUSTRY AWARD

Outline of award

This award recognises the outstanding contribution of someone who has been part of the aged residential care industry for more than ten years. This person will have continuously made a difference in the lives of numerous residents and staff members. The winner of this award could be anyone from a senior manager of a large group, care staff, non-care staff or a volunteer in the aged residential care industry.

For an individual to be eligible, they must have contributed to the aged residential care industry for more than ten years.

Entries should:

1. document how the commitment/skills of this individual have directly impacted on the quality of care the residents/family received over the timeframe (for example, someone in a management position may have trained staff for skilled care)

consider:

- » feedback from residents and/or family
- » evidence such as falls risk reduction or reduced infection
- » surveys
- » other team members and members of the aged residential care industry

2. provide examples of the positive benefit they have had on the industry

consider:

- » evidence of the individual's positive effect on the industry and the company(ies) within which they work/have worked
- » whether this individual has created a positive image.

YOUR ENTRY MUST INCLUDE:

- A completed entry form

YOUR ENTRY COULD ALSO INCLUDE:

- Photos
- Testimonials from residents, staff, families or the community

HOW TO ENTER

Entries must be submitted on the forms provided by the NZACA, which can be obtained either at the end of this booklet, by downloading from the NZACA website (conference.nzaca.org.nz).

CONTENT

A set of assessment criteria has been developed (included with the category information on the previous pages) to assist you in writing your entry. These criteria will assist the judges in assessing applications and determining a winner. To be considered, you must:

- » submit a completed entry form that clearly describes the entry, with all entry boxes in relation to the assessment criteria complete, included names and contact details for the nominated care facility.
- » be a current financial NZACA member for the 2019/20 year.

Please ensure that any evidence provided in support of nominations is relevant and clearly linked to the assessment criteria.

You may, in addition to your written entry, provide extra material to illustrate your entry or demonstrate how your entry meets the assessment criteria. All additional materials **MUST** be in hard copy format. Any PowerPoint presentations, photos, CDs or video material in soft copy format will not be considered as part of your entry, with the exception of the short video for the *Bidfood Excellence in Food Award for Care Homes and Hospitals*.

FORMAT

Entries **MUST** be submitted in the format outlined on the NZACA-provided forms, which may be completed by hand, or downloaded and filled out on a computer. Entries not submitted on these forms will not be considered.

Any extra or supporting material (such as photographs) **MUST** be supplied in hard copy to enable easy access by the NZACA National Office and judging panels. Any PowerPoint presentations, photos, CDs or video material in soft copy format will **NOT** be considered as part of your entry.

Please note that all material sent in support of your entry will become the property of the NZACA and may be used by the NZACA for the purpose of preparing cases studies, which may in turn be used by the NZACA at any time for the purposes of publicity. By submitting your entry, you consent to releasing this material to the NZACA.

Any documents and/or supporting material will not be returned. However, the NZACA will provide appropriate safeguards for the storage, use and disclosure of this information in accordance with the Privacy Act. You may request your information or material at any time from the NZACA.

LODGING APPLICATIONS

THREE copies of your entry are to be received by NZACA National Office by 5pm on Wednesday, 28 August 2019. Any application received after this time will not be considered.

Nominations should be in a sealed envelope, together with any supporting documentation (in hard copy format), marked and delivered as follows:

POSTAL DELIVERY:

NZACA/EBOS Healthcare Excellence in Care Awards 2019
c/- New Zealand Aged Care Association
PO Box 12481
WELLINGTON, 6144

or

HAND DELIVERY AND PHYSICAL ADDRESS*:

NZACA/EBOS Healthcare Excellence in Care Awards 2019
c/- New Zealand Aged Care Association
Petherick Tower, Level 11, 38-42 Waring Taylor Street
Wellington 6011

Please note

- » faxed and/or emailed applications **WILL NOT** be accepted
- » late entries **WILL NOT** be accepted.

EVALUATION AND JUDGING

Applications will be evaluated against the assessment criteria by the NZACA/EBOS Healthcare award judging panels, to identify finalists. The panels may seek further information, or they may wish to interview/site-visit a person, care facility or organisation before deciding finalists and/or winners.

OVERALL GUIDELINES

- » Ensure that you have a good understanding of all the required information before starting your entry.
- » Please try and keep your entry as concise as possible.
- » Ensure your supporting material demonstrates how your entry meets the criteria for the category you have entered.
- » Ensure **THREE COPIES** of your entry are sent on the correct forms provided by the NZACA.

FURTHER ASSISTANCE

If you require any further information, or if you have questions relating to the entry forms or categories, please do not hesitate to contact *June Murugan, Events and Marketing Specialist*

P 04 473 3159

E june@nzaca.org.nz

COMMONLY ASKED QUESTIONS

I THINK MY CARE FACILITY IS DOING SOMETHING THAT DESERVES RECOGNITION – SHOULD I ENTER?

Absolutely! We encourage all care facilities that are providing excellent care to their residents to take these awards as an opportunity to showcase them. We believe that there are many care facilities providing outstanding aged care to thousands of New Zealanders every day. There are not many opportunities for care facilities to demonstrate this publicly, and these awards aim to change this.

DO WE HAVE TO HAVE SPENT A LOT OF MONEY OR HAVE DONE SOMETHING ON A LARGE SCALE TO QUALIFY?

Definitely no. On the contrary, some of the best innovation may be using existing resources to improve the current service or taking small steps to make a big impact. We are interested in all examples — no matter how big or small — of providers being innovative in providing excellent care.

HOW DO I KNOW WHAT CATEGORY TO ENTER?

Assessment criteria for each category are included in the Award Information Booklet. If you think your care facility has been doing things that apply to more than one category, you can make separate applications for as many categories as you wish.

CAN I ENTER MORE THAN ONE CATEGORY?

Yes. A care facility may enter all the categories, or it may enter a single category more than once if it has different material for each entry. Each separate entry will require a different entry form.

DO I NEED TO SUBMIT A SEPARATE APPLICATION FOR THE OVERALL AWARD?

No. All entries will be eligible for the overall award and prize.

HOW DO I ENTER?

Entries should be submitted on the forms provided by the NZACA, which can be obtained either at the end of this entry booklet, by downloading from the NZACA conference website at <https://conference.nzaca.org.nz/> or by emailing june@nzaca.org.nz to request a copy. Applications must be received at the NZACA National Office no later than 5pm on 28 August 2019 to be considered. Please note that your care facility must be registered as a current financial member of the NZACA to be eligible.

WHAT KIND OF MATERIAL WILL I NEED TO SUPPLY?

As part of your entry, you will be required to describe what your care facility is doing to provide excellent care and give as much detail as possible. We are asking care facilities to submit their entries in writing. If care facilities would like to send supporting material, such as pictures, all materials **MUST** be submitted in hard copy to be included as part of the entry.

WHO WILL BE JUDGING THE AWARDS?

A panel of independent industry experts will carry out the judging. The judges base their decision on the materials supplied by care facilities in their entries.

HOW WILL WINNERS BE NOTIFIED?

There will be a shortlist of two finalists for each category. Finalists will be notified two weeks prior to the awards ceremony, and finalists in the care facility categories will be asked to give a short presentation on their entry at the NZACA National Conference in Wellington. The winners of all categories will be announced at the NZACA 'Movie Greats' themed awards ceremony on Wednesday, 23 October 2019.

WHERE CAN I GET MORE INFORMATION?

Entry forms, detailed information on the award categories and further information are available on the NZACA website:

W conference.nzaca.org.nz

If you have further questions regarding the awards, please contact *June Murugan, Events and Marketing Specialist*, NZACA:

E june@nzaca.org.nz

EXCELLENCE IN CARE AWARDS 2019 CARE FACILITY CATEGORIES ENTRY FORM

Please note this entry form is for the six care facility award categories. There is a separate entry form for the individual award categories on page 18.

1. CARE FACILITY AWARD CATEGORY

Please tick/cross the category in which you are entering.

Note: Only ONE category may be entered on each entry form, but you may submit more than one entry form to enter into different categories.

☐ INVACARE SMALL OPERATOR INDUSTRY AWARD

☐ BIDFOOD EXCELLENCE IN FOOD AWARD FOR CARE HOMES AND HOSPITALS

☐ MEDI-MAP COMMUNITY CONNECTIONS AWARD

☐ ARJO TRAINING AND STAFF DEVELOPMENT AWARD

☐ QPS BENCHMARKING INNOVATIVE DELIVERY AWARD

☐ JACKSON VAN INTERIORS BUILT AND GROWN ENVIRONMENT AWARD

2. NOMINATION INFORMATION

NAME OF NOMINATED CARE FACILITY
OR ORGANISATION

ADDRESS OF CARE FACILITY
OR ORGANISATION

BEST CONTACT PERSON AT NOMINATED
CARE FACILITY OR ORGANISATION

POSITION OF CONTACT PERSON

PHONE

EMAIL

3. DETAIL OF ENTRY

TITLE

Please give your entry a title that is descriptive of the entry

SYNOPSIS OF ENTRY

Please give a brief description of the entry and outcomes. *This will be used for promotional purposes.*

Please write no more than 100 words.



YOUR ENTRY

Please provide a summary of your quality improvement(s) and innovation(s).

What was your idea/issue, and what did you do?

What outcome(s) did you aim to achieve?

Please write no more than 200 words.



YOUR TEAM

Who were the key individuals or organisation(s) involved in the development and implementation of your entry.

What role did each of them play?

Please write no more than 100 words.



YOUR OUTCOMES

Describe the outcome of your entry — how and why is what you are doing/have done making a difference to the quality of the lives of residents, their families and/or staff?

Please write no more than 300 words.

4. ADDITIONAL MATERIAL

I have included a short video (four minutes maximum) of our food service programme. *Note: only one copy of your short video is necessary. The NZACA will make sufficient copies of the video for the judges.*

We/I have enclosed additional material/information to support our entry (optional).

5. DECLARATION

NOMINATOR

I (the nominator) understand that by signing this nomination form, I am supporting the nomination of this care facility/organisation, and that I may be asked for further supporting information by the judging panel.

PRINT NAME

SIGNATURE

RELATIONSHIP TO NOMINATED
CARE FACILITY

EXCELLENCE IN CARE AWARDS 2019 INDIVIDUAL CATEGORIES

ENTRY FORM

Please note this entry form is for the two individual award categories. There is a separate entry form for the care facility award categories on page 12.

1. INDIVIDUAL AWARD CATEGORY

Please tick/cross the category in which you are entering.

Note: Only ONE category may be entered on each entry form, but you may submit more than one entry form to enter into different categories.

<input type="checkbox"/>	LEECARE SOLUTIONS STAND-OUT INDIVIDUAL AWARD
<input type="checkbox"/>	VCARE LEGENDARY SERVICE TO THE AGED RESIDENTIAL CARE SECTOR AWARD

2. NOMINATION INFORMATION

Details of the person being nominated

NAME	<input type="text"/>
POSITION	<input type="text"/>
CARE FACILITY ASSOCIATED WITH	<input type="text"/>

Details of the nominee

NAME	<input type="text"/>	
POSITION	<input type="text"/>	
CARE FACILITY ASSOCIATED WITH	<input type="text"/>	
DOES THE NOMINEE KNOW ABOUT THIS ENTRY?	YES <input type="checkbox"/>	NO <input type="checkbox"/>

3. DETAIL OF ENTRY

TITLE

Please give your entry a title that is descriptive of the entry

SYNOPSIS OF ENTRY

Please give brief description of the person being nominated and why they are being nominated. *This will be used for promotional purposes.*

Please write no more than 100 words.



THE NOMINEE

Describe why the nominee should be considered for this award.

Consider how the individual has impacted on the quality of life of the resident(s) and their families and staff.

Please include examples.

Please write no more than 400 words.

4. ADDITIONAL MATERIAL

We/I have enclosed additional material/information to support our entry (optional).

5. DECLARATION

NOMINATOR

I (the nominator) understand that by signing this nomination form, I am supporting the nomination of this individual, and that I may be asked for further supporting information by the judging panel.

PRINT NAME

SIGNATURE